

New Developments in Science for Practicing Clinicians



Chairs

Professors Mauro Perretti and Magdi Yaqoob

William Harvey Research Institute,
London, UK

**Allocated 6 CPD credits by the
Royal College of Physicians**

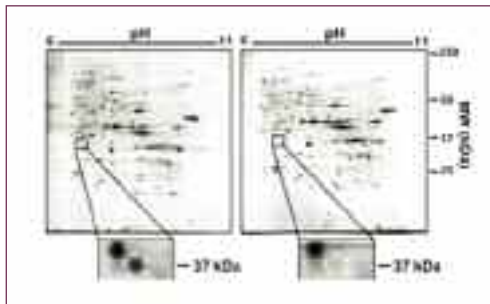
8 October 2010

Derek Willoughby Lecture Theatre,
John Vane Science Centre
Charterhouse Square, London,
EC1M 6BQ, UK

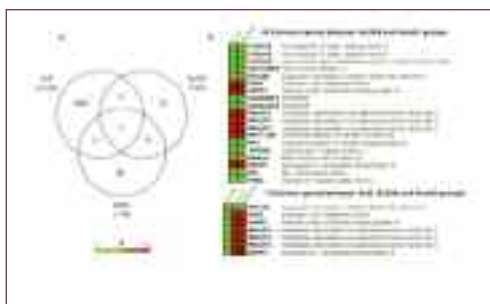
Register at [www.williamharvey.co.uk/
conferences/2010.htm](http://www.williamharvey.co.uk/conferences/2010.htm)

8 October 2010

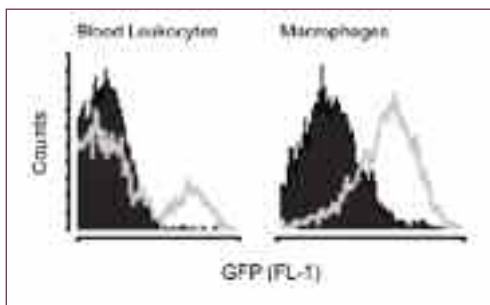
- 09:00** Registration, Tea and Coffee
- 09:25** Welcome
Professor Magdi Yaqoob,
William Harvey Research Institute
- 09:30** Microarray: Opportunities from Gene to Clinical Use
Professor Bryan Young,
Barts and The London SMD
- 10:00** Knock-out and Knock-in: Validation Process for Disease-Related Genes
Dr Fulvio D'Acquisto,
Barts and The London SMD
- 10:30** Refreshments
- 11:15** Proteomics: Unveiling New Clues for Cardiovascular Pathologies
Dr Manuel Mayr,
Kings College London
- 11:45** Biomarkers: Fundamental Aspects for Novel Drug Discovery
Dr Vincenzo Libri,
Imperial College
- 12:15** Flow Cytometry: A New Opportunity from Bench to Bedside
Professor Marion Macey,
Barts and The London SMD
- 12:45** Lunch



Proteomics



MicroArray



Flow Cytometry

13:55 Introductory Words to the Afternoon Session
Professor Mauro Perretti,
William Harvey Research Institute

14:00 Platelets and Thombosis Testing
Professor Tim Warner,
Barts and The London SMD

14:30 Stem Cell Therapy and Myocardial Repair
Professor Ken Suzuki,
Barts and The London SMD

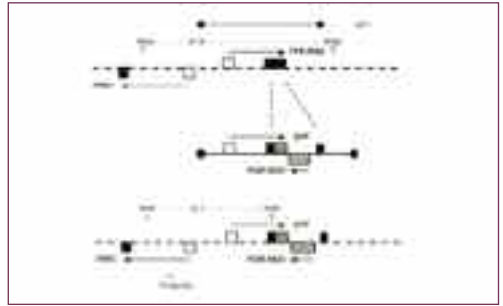
15:00 Genetics and Single Nucleotide Polymorphisms in Common Disease
Professor Mark Caulfield,
Barts and The London SMD

15:30 Refreshments

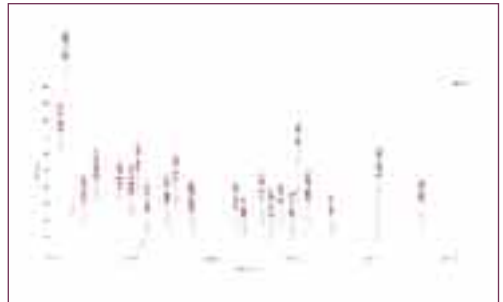
16:15 Endothelial Function as a Marker of Cardiovascular Health
Professor Amrita Ahluwalia,
Barts and The London SMD

16:45 **Special Lecture:**
Aspirin, COX-2 and Beyond!
Professor Rod Flower FRS,
Barts and The London SMD

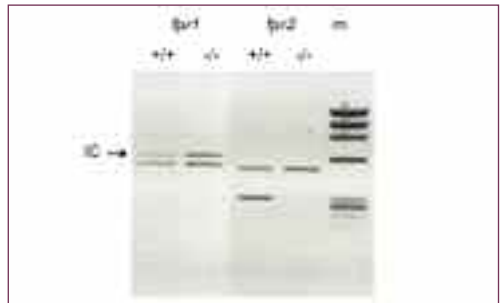
17:45 Adjournment



Gene Constructs



Mass Spectrometry



PCR

www.williamharvey.co.uk

William Harvey Research Limited
John Vane Science Centre
Charterhouse Square
London
EC1M 6BQ
United Kingdom
Tel: +44 (0)20 7882 8808
Fax: +44 (0)20 7882 6016
email: whrl@qmul.ac.uk

Registered in England – Registration No 2437946
Registered office: Charterhouse Square, London, EC1M 6BQ

WILLIAM HARVEY CONFERENCES