

**Eleventh John Vane Memorial Symposium  
on Prostacyclin Science and  
Pulmonary Vascular Disease**  
11-12 March 2016



# 11 March 2016

**8.30-9.30am** Registration, tea and coffee

**9.30am** Welcome  
**Chris Thiemermann, Queen Mary University of London, London, UK**

## Recent Developments in PAH

**Chairs: Stephan Rosenkranz, University of Cologne, Cologne, Germany**  
**Brendan Whittle, Queen Mary University of London, London, UK**

**9.45am** Actions of Treprostinil on VEGF-A Formation by Mesenchymal Stem Cells  
**David Smadja, Georges Pompidou European Hospital, Paris, France**

**10.15am** Microparticles and Pulmonary Hypertension  
**Francoise Dignat George, Aix-Marseille University, Marseille, France**

**10.45am** FoxO1 Transcription Factor in Pulmonary Hypertension  
**Soni Pullamsetti, University of Giessen, Giessen, Germany**

**11.15am** Refreshments

## Aspects of Survival and Heart Failure in PAH

**11.40am** Survival in PAH  
**Raymond Benza, Allegheny Health Network, Pittsburgh, USA**

**12.10pm** Pulmonary Hypertension in Left Heart Failure: Right Ventricular Function and Survival  
**Irene Lang, University of Vienna, Vienna, Austria**

**12.40pm** Lunch

## Clinical Aspects of PAH

**Chairs: Sheila Haworth, University College London, London, UK**  
**Jim White, University of Rochester, Rochester, USA**

**2.00pm** Pulmonary Hypertension in the Developing World  
**Sheila Haworth, University College London, London, UK**

**2.30pm** Life After Pump: Can We Transition Any Patients From Pumps to Pills?  
**Jim White, University of Rochester, Rochester, USA**

**3.00pm** Refreshments

**3.30pm** How Do Rehabilitation Programs Improve Patients with PAH?  
**Ekkehard Gruenig, University of Heidelberg, Heidelberg, Germany**

**4.00pm** Ex Vivo Lung Perfusion to Improve Outcome in Lung Transplantation  
**Shaf Keshavjee, Toronto General Hospital, Toronto, Canada**

**4.30pm** The Broad Spectrum of Pulmonary Hypertension: Challenging the Clinical Classification  
**Stephan Rosenkranz, University of Cologne, Cologne, Germany**

**5.00pm** Meeting Adjournment

**5.00pm** Reception at the Royal Society

# 12 March 2016

## Trials and Targets in PAH

**Chairs: Irene Lang, University of Vienna, Vienna, Austria**  
**Lewis Rubin, University of California San Diego, San Diego, USA**

**9.30am** New Guidelines for PAH  
**Marc Humbert, Université Paris-Sud, Paris, France**

**10.00am** Pulmonary Hypertension Trials: How Can We Do Better?  
**Ioana Preston, Tufts University, Boston, USA**

**10.30am** Effectiveness of Oral Prostacyclin Therapies for PAH  
**Lewis Rubin, University of California San Diego, San Diego, USA**

**11.00am** Treating PAH by Targeting BMPR2  
**Nicholas W. Morrell, University of Cambridge School of Clinical Medicine, Cambridge, UK**

**11.30am** Refreshments

## Debate: Combination Therapy Should Be Used Immediately in all Patients with PAH

**Moderator: Robert Naeije, Université Libre de Bruxelles, Brussels, Belgium**

**12.00pm** Pro Debate  
**Olivier Sitbon, Université Paris-Sud, Paris, France**

**12.20pm** Con Debate  
**Luke Howard, Imperial College, London, UK**

**12.40pm** Debate Discussion

**1.00pm** Lunch

**2.30pm** Close of meeting

# 11-12 March 2016

## Royal Society, London, UK

### Faculty Chair

**Professor Chris Thiemermann**, Queen Mary University of London, London, UK

### Faculty

**Professor Sheila Haworth**, University College London, London, UK

**Professor Irene Lang**, University of Vienna, Vienna, Austria

**Professor Robert Naeije**, Université Libre de Bruxelles, Brussels, Belgium

**Professor Stephan Rosenkranz**, University of Cologne, Cologne, Germany

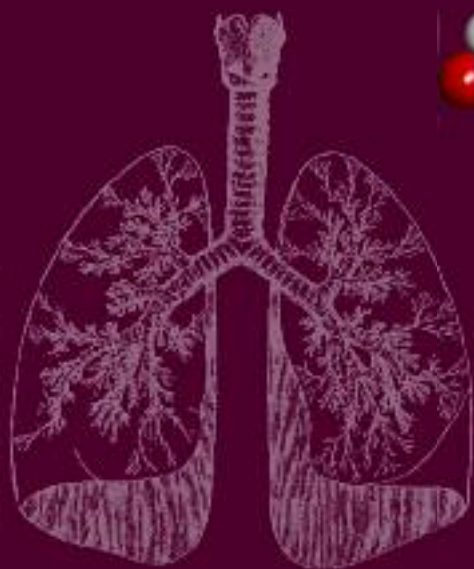
**Professor Lewis Rubin**, University of California San Diego, San Diego, USA

**Professor James White**, University of Rochester Medical Center,  
Rochester, USA

**Professor Brendan Whittle**, Queen Mary University of London, London, UK

Allocated 8 CPD credits by Royal College of Physicians

[www.williamharvey.co.uk](http://www.williamharvey.co.uk)



William Harvey Research Limited

John Vane Science Centre

Charterhouse Square

London

EC1M 6BQ

United Kingdom

Tel: +44 (0)20 7882 8808

email: [whrl@qmul.ac.uk](mailto:whrl@qmul.ac.uk)

Registered in England – Registration No 2437946

Registered office: Charterhouse Square, London EC1M 6BQ