

Pioneering research that advances the discovery of new medicines

William Harvey Research
(WHR) is the premier
pharmacological centre
of therapeutic innovation
combined with an exceptional
entrepreneurial track-record.

//

I have been an admirer of the quality of WHR's ground-breaking research over its thirty-year history, so I am delighted that this new fundraising campaign will broaden and deepen its innovative work, which is vital for addressing urgent areas of unmet medical need."

Professor Tim Williams FRS,
*Emeritus Professor in Airway Disease, Imperial College
London, WHRI International Scientific Advisory Board*



Front cover image:

This high resolution image shows white blood cells (in green) that are an essential part of the immune system and defend the body against infections. However, after heart attacks or strokes these cells become destructive, invading blood vessel walls (in bright red) and damaging the surrounding tissue. Dr Tamara Girbl and Professor Sussan Nourshargh of WHR are applying this state-of-the-art confocal microscopy to find out why and see how effective therapies can be developed to fight cardiovascular disease.



William Harvey Research Foundation

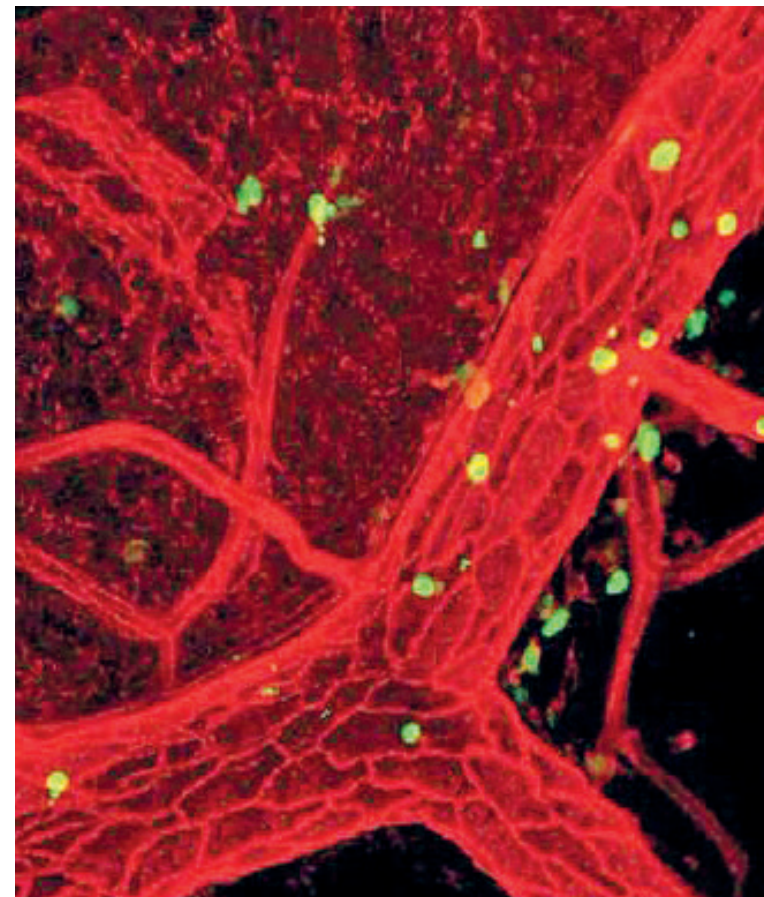
John Vane Science Centre
Charterhouse Square
London
EC1M 6BQ

development@whrf.org.uk
www.whrf.org.uk



Registered in England - Registration No. 2472965
Charity Registration 803012

WHRF WILLIAM HARVEY
RESEARCH FOUNDATION



Pioneering Medical Research




Funding the future of medicine

A treatment for arthritis; therapy for heart failure; a cure for macular degeneration; cures for rare diseases – you would think that all these obvious research projects would be adequately funded.

Sadly, they are not. As for many equally promising research programmes aimed at meeting unmet medical need, the failure to fund leaves gaps in resources and equipment and is stalling progress on medical advances that could have a hugely beneficial impact on large numbers of people around the world.

Real advances in medicine often start with a 'Eureka!' moment and these are usually impossible to fund from conventional sources. WHR has historically funded these and the examples given above have all received grants in the past. With resource constraints in academia and in the corporate world, WHR is short of specialists to progress some of this vital work, and often lacks the basic equipment it needs.

Much of WHR's work is world leading and often unique, but demand for funds exceeds supply; WHR is now launching a campaign to fill this gap...



...We are aiming to **raise £5 million over the next five years** to fund 'Eureka!' moments...

...as well as extra resource and equipment for more established, but still early stage, research.

Developing therapies delivering hope

In the City of London, WHR, an institution founded in 1986 by Sir John Vane, a Nobel Laureate who identified the mechanism by which aspirin worked, is a world leading centre for medical research aimed at new therapies such as those set out earlier. With over 500 research staff, it is one of the UK's most important medical research centres. WHR is affiliated to Bart's, the first hospital in England and to Queen Mary, University of London. The charitable foundation associated with WHR has been quietly funding projects for many years, but has now reached the point where the demand for funding exceeds current resources.

Unlocking the genome (WHR shares its campus and director with Genomics England) has led to a mushrooming of the possibilities for really innovative medical research.



WHR needs new funding to ignite further acceleration of medical technology and research, to increase our chances of discovering more cures to more diseases.